

A man wearing a black Spirit FC polo shirt, a black cap with the Spirit FC logo, and glasses. He is standing on a soccer field with other people and trees in the background. The text "Spirit FC / Managers" is overlaid on the image.

Spirit FC / Managers



GIOCA Thank you!



Key information

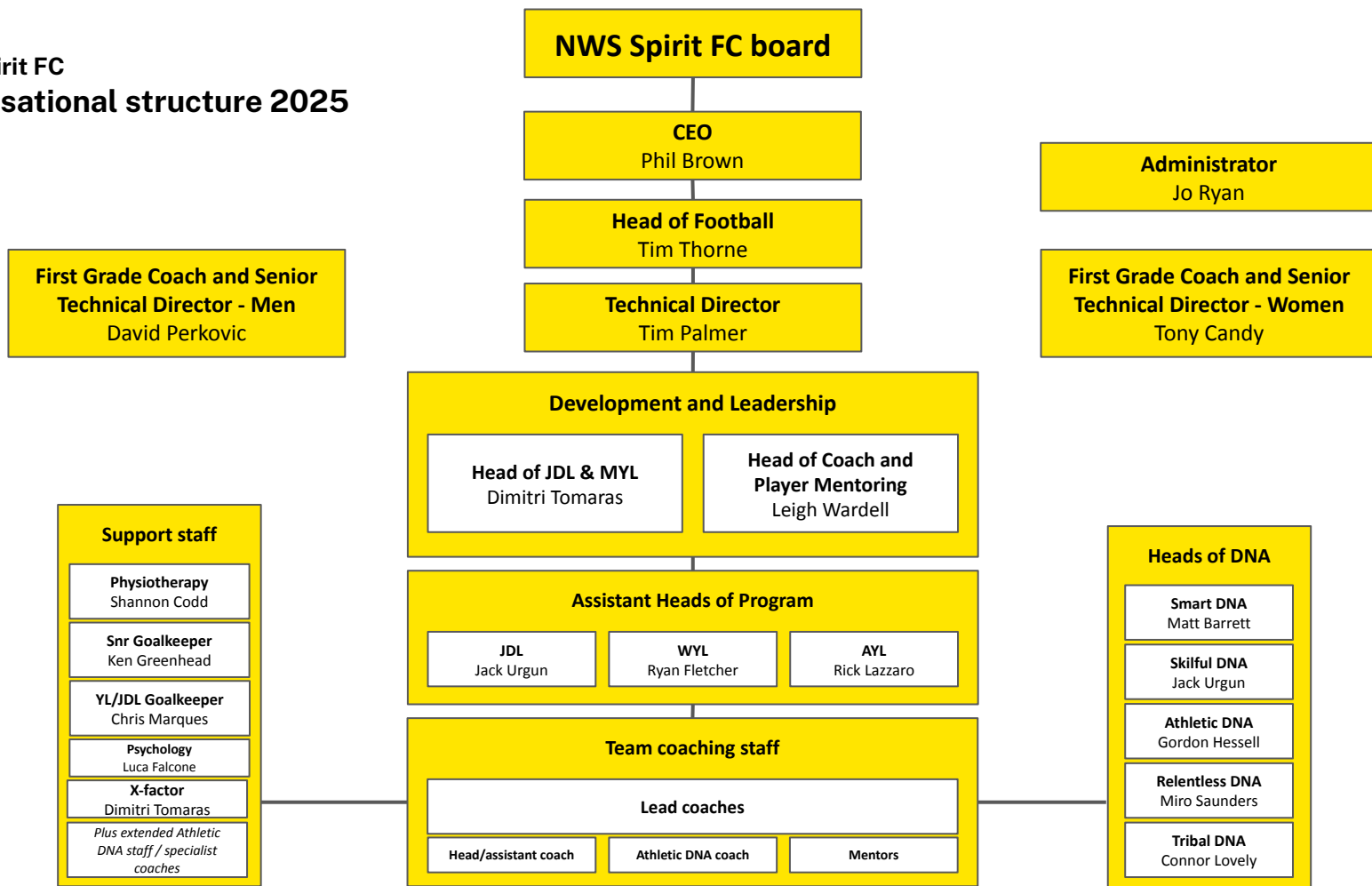
The two primary sources of information for managers are:

- [NWS Spirit FC / Managers guide - 2025](#)
A Google Doc outlining key requirements & logistics for the role
- [The online managers hub](#)
Online website linking to relevant docs, spreadsheets & more



NWS Spirit FC

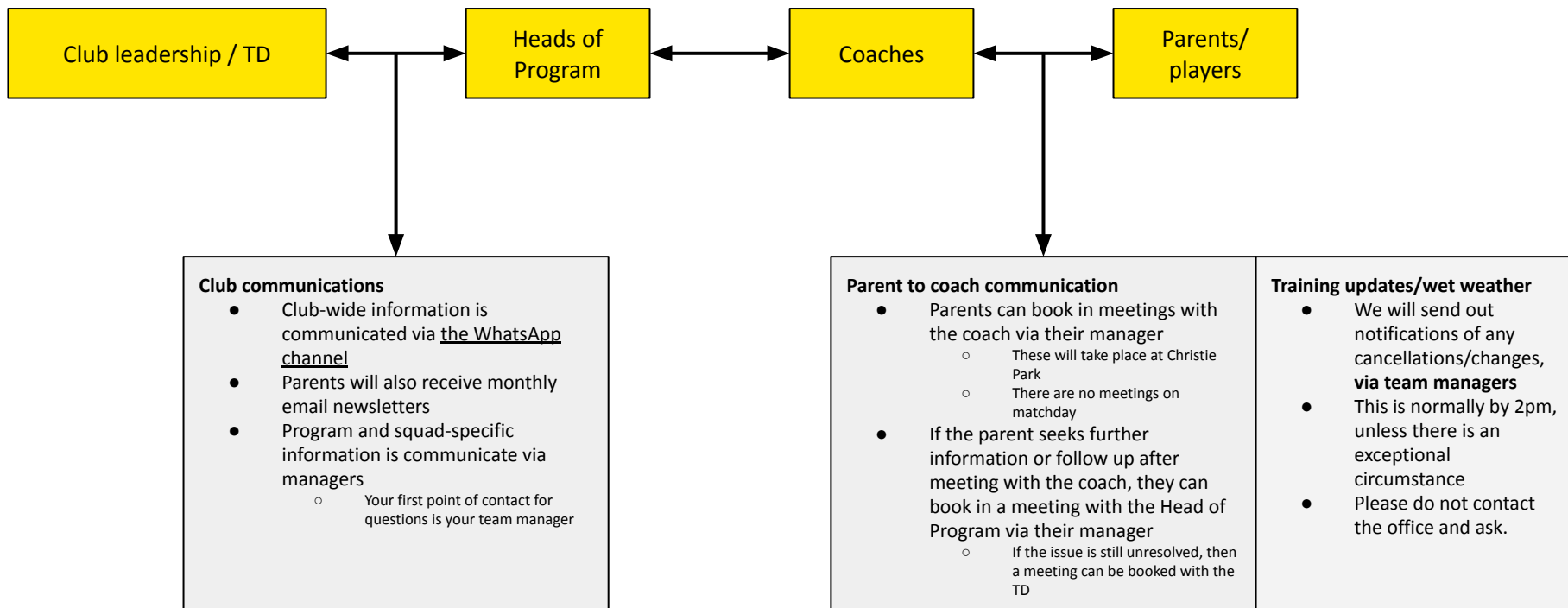
Organisational structure 2025





Club communication channels

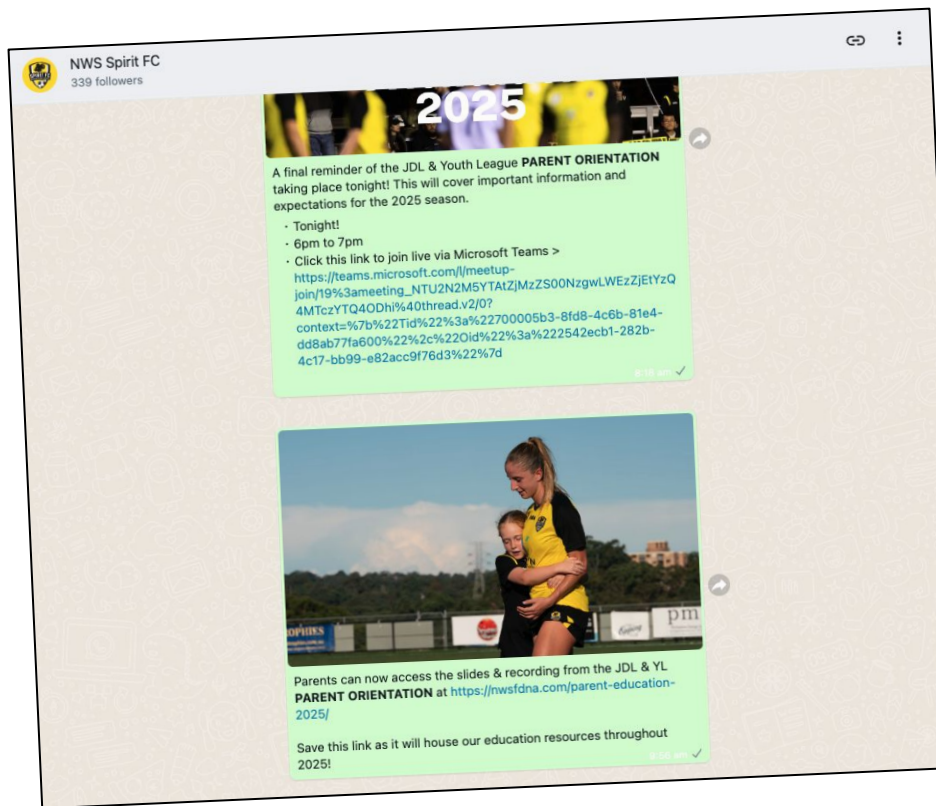
For current Spirit FC players



In the event of duty of care/player welfare concerns, parents can contact the Technical Director or MPIO directly



Club communications





Yearly calendar

The yearly calendar can be found [by clicking this link.](#)

The key sections to note are:

- Tournaments
 - Bathurst Cup
 - June school holiday tournaments
- Club events
 - Jersey Presentation Day
Saturday February 1
 - Tribe Day
Saturday March 15
- IDP Nights
 - W/C February 17 and May 12
 - We will be creating the online booking system for 2025



PlayFootball registrations

We understand how challenging this has been as FA migrate to the new system.

Please refer parents to contact PlayFootball for support and **not** the office.

- (02) 8880 7983
- support@playfootball.com.au



Match days

A full run sheet can be found at [NWS Spirit FC / Christie Park matchdays - 2025](#)

Please note...

- Please complete Dribl the Friday before matches, in case of any issues which we can resolve prior to the weekend
 - Coaches have been instructed to finalise squads by Fridays 9am
- Managers are not to sit in dugouts or enter changerooms at half-time
- If there any issues with opposition or parents, please report to the Head of Program or TD immediately.
- **Please also immediately notify us if any coaching is taking place by Spirit parents.**



GPS

All Youth League players are strongly encouraged to purchase a GPS to support the tracking and monitoring of their physical performance. 99% of our players have purchased a GPS, contributing to the development of highly athletic footballers.

We will be sending out GPS information and ordering processes next Monday January 13 via email.

We will ask managers to...

- Forward on a WhatsApp reminder to parents on Monday, Wednesday and Friday
- Refer any who opt not to purchase on to the Head of Program



Parent education

We will primarily communicate the parent education sessions via the WhatsApp channel and our monthly newsletters, but it is always helpful for managers to forward on relevant updates.

This year, we have...

- DNA Day
- Parent Education Conference
- DNA In Depth on the first Monday of each month
 - Topics covered include injury education, talent support programs & balancing school



NWS SPIRIT FC

DNA DAY

SUNDAY JANUARY 12

TIME	PLAYERS	PARENTS
9:45am	JDL arrives	
10am	JDL / Who we are & how we play Wear your training kit & boots as we take players through our club values, our history & our core actions in different practical presentations!	<ul style="list-style-type: none"> • Welcome to Spirit (new JDL parents) Function Room 1 • How & what we coach in JDL (returning JDL parents) Function Room 2
11am		Select your session: <ul style="list-style-type: none"> • Growth & maturation with Gordon Hessel Function Room 1 • Psychology in football with Luca Falcone Function Room 2
11:45pm	YL arrives	
12pm	Whole club celebration We come together as a whole tribe to celebrate the start of the season	Watch and enjoy the club celebration. <ul style="list-style-type: none"> • The Spirit Shop will be open for orders • You can inspect our new gym!
1pm	YL / Who we are & how we play Wear your training kit & boots as we take players through our club values, our history & our core actions in different practical presentations!	<ul style="list-style-type: none"> • Welcome to Spirit (new YL parents) Function Room 1 • Progressing as a Youth League player (returning YL parents) Function Room 2
2pm		Select your session: <ul style="list-style-type: none"> • Growth & maturation with Gordon Hessel Function Room 1 • Psychology in football with Luca Falcone Function Room 2

PLUS PHYSIO AVAILABLE ALL DAY FOR PLAYER PRE-SEASON SCREENINGS

FIND OUT MORE AT OUR OFFICIAL WEBSITE / [SPIRITFOOTBALLCLUB.COM](https://www.spiritfootballclub.com)



Coach education for players

Traditionally run in January, these courses have been moved to April due to...

- Supporting a busy preseason schedule
- FNSW requirements
- To allow more players to receive a formal qualification

More information about what will be involved will be provided in March. The intent is this will be a one day commitment.

Players will be able to progress from these courses to coaching roles in the NWSF Academy & as part of NWS Spirit FC's coach apprenticeship program.



Referee education for players

Providing referee education to our players is a long-standing tradition that develops players football knowledge, brings to life our values, prepares them for game leading, and provides an opportunity to progress towards paid refereeing roles. The details are:

- Friday January 24
- Start 8.15am; finish 2pm
- Christie Park
- Wear training kit and shoes appropriate for exercise
- Registration to progress to becoming a referee will be provided after the event



Referee education for players

All players complete referee education during their time at Spirit. Players who attend this referee education day in 2025 are:

- All players in:
 - M13s
 - A13s
 - W14s
- New players, or players who missed the 2024 course, in:
 - M14 to M18s
 - A14 to A18s
 - W14 to W18s



JDL game leaders (by YL players)

A Youth League squad is allocated to each JDL timeslot, i.e....

- MJDL 9/10s (8am to 10am)
- MJDL 11/12s (10am to 12pm)
- WJDL 10-13s (8am to 10am)

...to be game leaders.

Managers are to allocate four players for each of their teams allocations.

These players are instructed to report to JDL managers 15 minutes prior to the timeslot. Managers brief them on their role and remind them of expectations.

They are asked to bring a whistle, but should spares be required, these can be found in the medical room.



JDL in the Spirit Tribe

JDL squads are allocated three Spirit Tribe matches, where they attend a Mens or Womens First Grade match and provide active support.

- This is compulsory for all players
- Wear Spirit FC polo & track pants
- We ask if managers can attend to support the coaches

Players are to arrive 15 minutes prior to kick-off, and to gather in the Spirit Tribe area (next to home dugout) where they will meet Augustine Murphy on arrival.

This also involves walking out as mascots with the First Grade team before kick-off, and singing songs/playing the instruments in the tribe area.



YL First Grade allocations

YL squads are allocated to support First Grade matches as either...

- Ball kids (YL 13s to 16s)
 - Allocate five players
- Match support (YL 18s)
 - Allocate four players

Timings are as set in the allocations document. Players are to wear polo and kit. They meet Augustine Murphy on arrival.

Ball kids involves ensuring the smooth flow and recuperation of balls during the match.

Match support involves ticket operations, gate duty & coordination of matchday events including half-time games.





Player expectations

These were outlined in the parent orientation. Please support coaches in the adherence of players to these expectations.

Training attendance

- Collected using InstaTeam app
- Data transferred to club master spreadsheets by coaches

Match minutes

- Collected using SubTime app
- Data transferred to club master spreadsheets by managers



Football menu

We pride ourselves on giving players lots of opportunities within their “football menu”. We recognise this can result in lots of communication required to players around their movements and appreciate the support of managers in this process.

- The appointment of lead coaches within the new YL coaching model is intended to support and aid the processes of players moving across age groups & across programs
- For YL field players attending Sydney FC, coaches will communicate the selection of two players to managers by Sunday 5pm, who will then confirm via the NWS Spirit FC x Sydney FC group chat
- For YL goalkeepers attending Sydney FC, this is a roster basis and will be communicated directly to those goalkeeper parents
- A reminder that our coaches do not make the selection decisions for Football NSW or Football Australia programs. We do, however, have worked hard to build relationships with these programs to support club and player outcomes.



Additional volunteers

We are always after additional volunteers for...

- Spirit Shop
 - Currently led by Lisa Billington (M13s)
 - Additional support is always appreciated at club events (such as DNA Day)
- Photography & media
 - Parent photographers can join the [NWS Spirit FC / Media chat](#), where we ask they post their photos so we can share on our social media
- Fundraising & sponsorship
 - This is a key area where we feel we can grow the club
 - Please encourage parents to support
- Maintenance
 - Currently led by Frank van der Zanden (W16s)
 - Tradies, engineers, locksmiths are always welcome!



Kit

Each manager will receive a kit for the season. These will be provided during January.



Key action items

- Make sure InstaTeam and SubTime all ready to go
- Allocate your players for the various seasonal responsibilities (once TP confirms spreadsheet)
 - We recommend setting the allocations alphabetically, then placing parents/players responsible for swapping with each other if unable to attend their allocation
- Allocate parents for the match day volunteer roles
 - Follow the same process as above
 - However, you may find some parents will naturally gravitate or be happy to assume one role for the season

A woman with blonde hair and sunglasses, wearing a black and yellow soccer jacket, holds a large stack of yellow signs. A young boy in a similar soccer jacket is standing next to her, holding a black bag with 'elsport.com' written on it. The scene is outdoors, likely at a sports event.

Thank you!